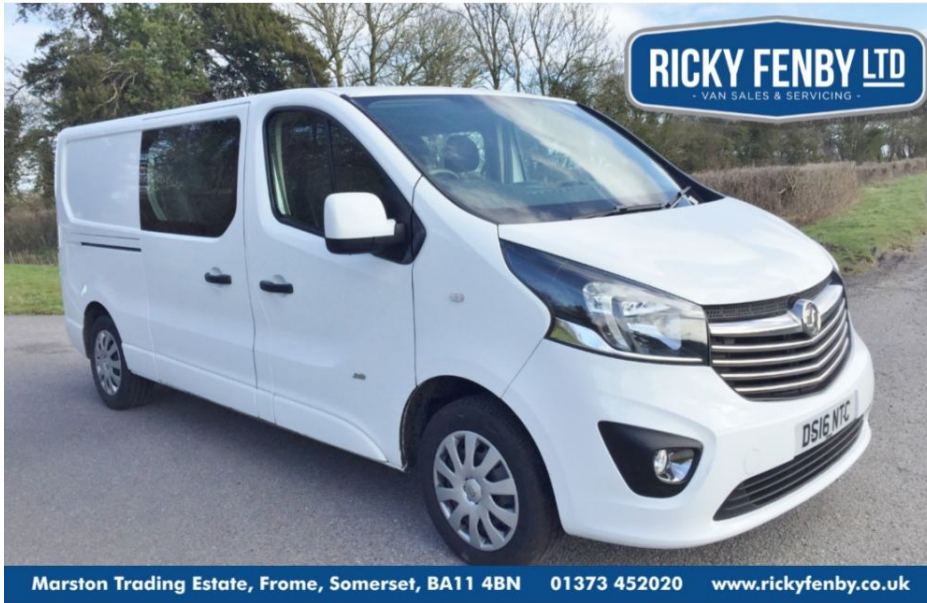


**VAUXHALL VIVARO 2900 L2H1 CREW VAN SPORTIVE.**  
**£11,495 + VAT**



**Jun 2016**

**71906 miles**

**Manual**

**Diesel**

**Feature Box**

<b>Crew van</b>	<b>12 months MOT</b>	<b>115BHP</b>
<b>Manufacturer's warranty still valid</b>	<b>Sportive</b>	<b>2 side loading doors</b>
<b>6 seats</b>	<b>Coloured coded</b>	<b>Air-Con</b>
<b>Bluetooth telephone integration</b>	<b>Cruise Control</b>	<b>Digital speedo</b>
<b>Reversing sensors</b>	<b>2 x USB</b>	<b>AUX Input</b>
<b>CD Player &amp; Radio</b>	<b>1 Owner</b>	<b>6 speed</b>
<b>Bulkhead with glass</b>	<b>ECO mode</b>	<b>Electric Mirrors</b>
<b>Electric Windows</b>	<b>Front Fog Lights</b>	<b>ISOFIX</b>
<b>Rear barn opening doors</b>	<b>Rear courtesy lights</b>	<b>stereo/hands free controls on steering column</b>
<b>2 Keys</b>	<b>Low % Finance Available</b>	<b>Passenger Airbag</b>

**Technical Data**

<b>CO2 Emmissions</b>	170	<b>Engine Capacity</b>	1598
<b>Fuel Type</b>	Diesel	<b>Number of Doors</b>	6
<b>Transmission</b>	Manual	<b>Year of Manufacture</b>	2016
<b>Color</b>	WHITE	<b>Euro Status</b>	E5
<b>BHP</b>	114	<b>MPG Combined</b>	43.5

Ricky Fenby Ltd make every effort to ensure all prices and vehicle details on this website are correct. However, as these are used vans, the standard specification can sometimes differ from that shown. Please satisfy yourself that a vehicle has a specific feature that is important to you before purchasing. Our staff will be happy to assist you. Prices, offers and details of vehicles are subject to change without notification.